



O.H. Hinsdale Wave Research Laboratory

OREGON STATE UNIVERSITY • COLLEGE of ENGINEERING

Instrumentation

The HWRL has a large inventory of conventional and state-of-the-art instrumentation to measure free surface, velocity, pressure, stress, turbidity, and depth. Data can be made available in near-real time via the web.

Free Surface

- Up to 35 resistance-type wire wave gages
- 3 Acoustic depth gages (Banner Engineering, Corp) 0.2-5m
- 8 Acoustic depth gages (Senix Corp) 0.2-2m

Velocity

- 12 3-D acoustic-Doppler velocimeter (Nortek Vectrino)
- 4 2-D acoustic-Doppler velocimeter probe heads
- 3D Stereo Particle Image Velocimeter system (LaVision)

Pressure/Strain

- 15 miniature pore pressure transducers (Druck PDCR81)
- 12 pressure transducers, 0-15 psig (Druck PDCR830)
- 5 pressure transducers, piezo 0-8.3 psig (PCB,W106B)
- 5 10ch, 1 4ch strain gage conditioner (Vishay 2100)
- 4 50Kip, 4 20Kip pancake load cell (DeltaMetrics)
- 2 10Kip, 6 2Kip rod end load cell (DeltaMetrics)

Turbidity

- 16 optical backscatter sensor (D&A Instr., OBS-3)

Bathymetry

- 2 32 component ultrasonic ranging system (SeaTek)
- 4 laser range finder 0.2-200 m (Dimetix DLS-A30)
- LIDAR survey through subcontract arrangement

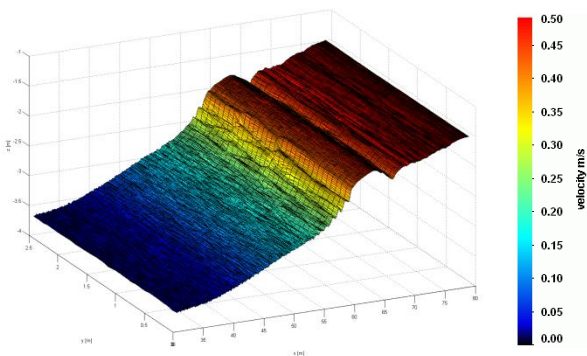


Data Acquisition System

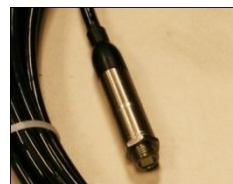
- 3 Modular PXI architecture DAQ systems, each with
 - Built-in signal conditioning and anti-aliasing
 - 64 channel, 16-bit analog acquisition
 - Digital pulse generation, external device synchronization
 - 16 channel RS-232 / serial data recording
 - DAQs can be synched to provide 192 analog 48 digital ch
- 1 Modular PXI architecture DAQ system with
 - 4 channel RS-232 serial, 3 channels IEEE 1394a

Video

- PhaseSpace Motion Capture system (8 cameras)
- 3 submersible DeepSea Seacom 2000 cameras
- Atlantis AUW-5800 underwater video
- 10 web cameras (7 Axis 213-PTZ, 3 Axis 211M)
- 2 Sanyo 9.1MP handheld camcorders
- ARRI Lighting System (Chimera Perfect Lighting)
- 2 DeepSea Sealite submersible lights



Acoustic profiler for sediment transport



Pressure Druck PDCR830



DeltaMetrics Load Cell



ADV 3D probehead



This facility is partially supported by the George E. Brown Jr. Network for Earthquake Engineering Simulation (NEES) program of the National Science Foundation

Web: <http://wave.oregonstate.edu>
Tel: +1 (541) 737 - 3631 | Fax: +1 (541) 737 - 6974